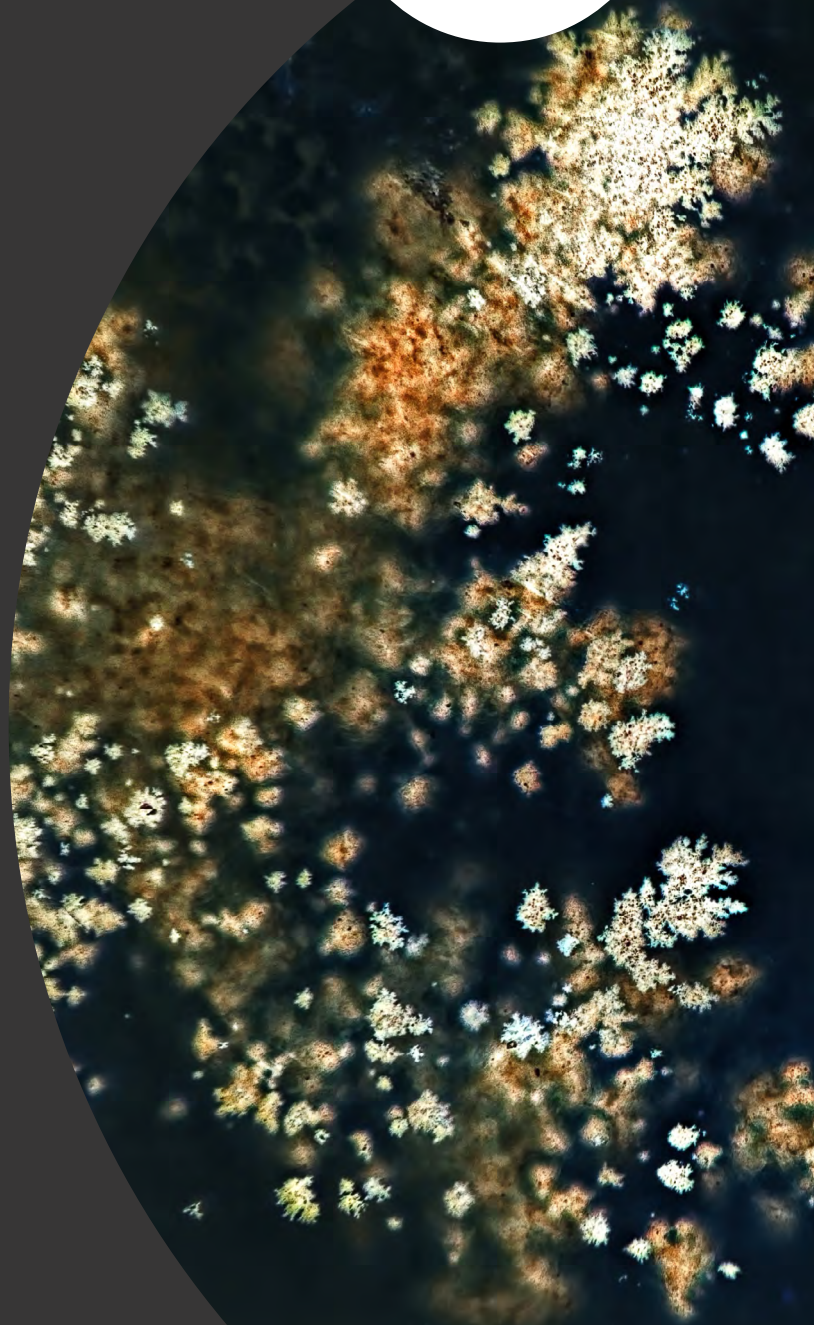


Contemporary Approaches to Research

in Mathematics, Science, Health
& Environmental Education

22-23 November, 2021



Deakin Downtown
Level 12, Tower 2, Collins Square
727 Collins Street, Docklands

bit.ly/CAR2021registration

Contemporary Approaches to Research in Mathematics, Science, Health and Environmental Education Symposium

The symposium will focus on practical and theoretical aspects of research methodology. It follows the highly successful symposia held annually from 1993 to 2005 and again from 2010 to 2020, in which methodological techniques and issues (such as socio-cultural perspectives, productive use of quantitative data, collaborative practitioner research designs, analysing discourse) have been discussed in a lively, informal setting.

Keynote speakers



Paul Hart

Professor Emeritus and Adjunct
Professor of Science and
Environmental Education,
University of Regina, Canada.



Robin Bellingham

Lecturer in Education,
Pedagogy and Curriculum,
Deakin University.

Registration

Deakin Students: \$55 per day
Non-Deakin Students: \$75 per day
Deakin Staff: \$75 per day
General Public: \$95 per day

Register online at: bit.ly/CAR2021registration

Submit an abstract

If you are interested in presenting at this symposium please register your expression of interest before Friday 1 October 2021 on the [Re-Imagining Futures in STEM E](https://deakinSTEME.org) website (deakinSTEME.org), which provides online submission.

Each presentation should be up to 12 minutes in duration. It should briefly outline the research question being addressed and may include the findings or likely outcomes of the research, but should focus mainly on the research methodology.

Reports on work in progress are welcome.

Presenters will be invited to submit a proposal for a chapter for the Cambridge Scholars Publishing book series Contemporary Approaches to Research in STEM Education. Proposals due 26 November 2021, accepted chapters due 19 February 2022.

Enquiries: peta.white@deakin.edu.au